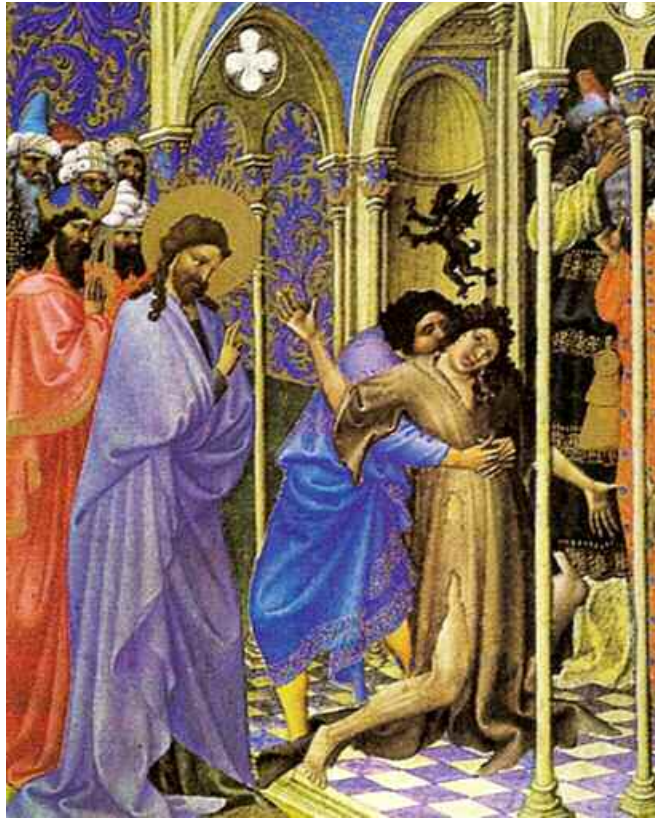


The Measure of Amenability to Planetary Vibrations Part 4

NEPTUNE MAY BE SAID to represent the invisible worlds in their more positive aspects, and those who come under the adverse aspects of this planet are, therefore, brought into touch with the most undesirable occupants of the invisible worlds. Actual obsession, whereby the owner of a body is deprived of his vehicle, takes place under the ray of Neptune, and no materializing seance could ever be held were it not for this stellar vibration. Magic, white or black, can never be put to practical use save under and because of this Neptunian vibration. Apart from this ray it would remain theory, speculation, and book learning. Therefore the Initiates of every Mystery School, spiritual seers who have full control of their clairvoyant faculty, and astrologers are amenable in varying degrees to the ray of Neptune. The black magician and the hypnotist, who is a twin brother to the former, are also dependent upon the power of this stellar ray for use in their nefarious practices.

The highest human development at the present time, namely, the soul unfoldment which is undertaken in the Mystery Temples through Initiation, is directly the result of the Neptunian Ray. For just as evil configurations with Neptune lay men liable to assault by invisible entities, so the good configurations with Neptune are particularly required to enable a man to unfold by Initiation all his soul powers and become a conscious agent in the invisible worlds. Let us remember, however, that good or evil configurations are not the result of chance or luck. The horoscope shows the tendencies of the



Limbourg Brothers, *The Très Riches Heures of Jean, Duke of Berry*, 1409-1415, Musée Condé, Chantilly

The Exorcism

While demonic possession was more common in the days of Christ Jesus when ego organizations were not as developed, the influence of negative spirit entities today may be more dangerous for being subtler and less overt. Moreover, Max Heindel notes that in today's "civilized countries...demonic possession is far from infrequent."—Web of Destiny, p. 41

coming life; it shows what we have earned by our past living and therefore what we are entitled to in the present life.

Moreover, it should always be kept in mind that the stars impel but they do not compel. Because a man or woman has an evil configuration with Neptune or Uranus, it is not unavoidable that they should go into active, evil mediumship or black magic and thereby make life harder for themselves in the future. Their opportunity to do so and the temptation will come at certain times when the heavenly time-markers point to the right hour on the clock of destiny. Then is the time to stand firm

for the good and for the right. Being forewarned through a knowledge of astrology, one is also forearmed and may the easier overcome when such an aspect culminates.

Thus we have seen in the three previous articles on this subject that man is amenable to the planetary rays in an increasing measure as he advances through evolution; but the more highly developed he becomes spiritually, the less he will allow the planets to dominate him, while the younger soul is driven unresistingly along with the tide of life in whatever direction the planetary vibrations propel him. It is the mark of the advanced soul that he keeps the true course regardless of planetary vibrations. Between these two extremes there are naturally all gradations. Some are excessively amenable to the rays of one planet, and the bark of life of such men and women is driven upon the rocks of sorrow and suffering that they may learn to evolve within themselves the will power that will finally free them from all domination by the ruling stars. As Goethe, the great mystic, said:

*From every power that holds the world in chains
Man frees himself when self-control he gains.*

It may be asked: Have we run the gamut of vibrations when we have learned to respond to all the seven planets which are mythically represented as the seven strings on Apollo's Lyre? In other words, is Neptune the highest vibration to which we shall ever respond? The Western Wisdom Teachings tell us that there are two more planets in the universe which will be known in future ages, and that these will have an influence in developing qualities of so transcendent a nature that we cannot now understand them. The number of Adam, man or humanity, is nine, and there are nine rungs upon the stellar ladder by which he is ascending to God. Up to the present time he has climbed only five of these rungs, namely, Mercury, Venus, Mars, Jupiter, and Saturn, and even the vibrations of these he has not by any means learned. Uranus and Neptune are slowly coming into our lives; they will not become active in the same manner and to the same degree that, for instance, the Moon and Mars are at the present time, until many ages have passed. But even when we have learned to respond

to them, there are two more of which we shall know something later on. It is the opinion of the writer that these two are probably not felt by any except those who have graduated from the Greater Mystery School and the Hierophants of that sublime institution.

In concluding this article on the amenability of man to planetary vibrations we quote from *The Rosicrucian Mysteries* a part of the article on "Light, Color, and Consciousness."

"Truly, God is One and Undivided. He enfolds within His being all that is, as the white light embraces all colors. But He appears threefold in manifestation, as the white light is refracted in three primary colors, blue, yellow, and red. Wherever we see these colors they are emblematical of the Father, Son, and Holy Spirit. These three primary rays of divine life are diffused or radiated through the Sun, and produce life, consciousness and form upon each of the seven light bearers, the planets, which are called the "Seven Spirits before the Throne." Their names are Mercury, Venus, Earth, Mars, Jupiter, Saturn, and Uranus. Bode's law would indicate that Neptune does not belong to our solar system, and the reader is referred to *Simplified Scientific Astrology* by the present writer for mathematical demonstration of this contention.

"Each of the seven planets receives the light of the sun in a different measure according to its proximity to the central orb and the constitution of its atmosphere. The beings on each, according to their stage of development, have affinity for some of the solar rays. They absorb the color or colors congruous to them, and reflect the remainder upon the other planets. These reflected rays bear with them an impulse of the nature of the beings with whom they have been in contact.

"Thus the divine light and life come to each planet, either directly from the sun or reflected from the six planets. As the summer breeze which has been wafted over blooming fields carries upon its silent, invisible wings the blended fragrance of a multitude of flowers, so also the subtle influences from the Garden of God bring to us the mingled impulses of all the Spirits, and in that vari-colored light we live and move and have our being.

"The rays which come directly from the sun are

productive of spiritual illumination; the reflected rays from other planets make for added consciousness and moral development; and the rays reflected by way of the moon give physical growth.

“But as each planet can absorb only a certain quantity of one or more colors according to the general stage of evolution there, so each being upon Earth—mineral, plant, animal, and man—can only absorb and thrive upon a certain quantity of the various rays projected upon the earth. The remainder does not affect it or produce sensation any more than the blind are conscious of light and color which exist everywhere around them. Therefore each being is differently affected by the stellar rays; and a knowledge of the science of astrology, a fundamental truth in nature, is of enormous benefit in the attainment of spiritual growth.”

Besides the stellar vibrations which we have discussed in the foregoing, there is one of vital importance to which all mankind is responsive, namely, that of the lunation or new moon. The progressed planets may be regarded as the hour hand of a clock. They mark the year when certain events are due according to their positions and their aspects and our amenability to their vibrations. By them the destiny or opportunity in store for mankind is forecast; but unless the moon, which corresponds to the minute hand in our illustration of the clock of destiny, moves along through the houses of the horoscope by progression and gives her consent by acting as a focus for the planetary vibrations, these would never take effect upon humanity.

Besides the actual progression of the moon and the planets in the horoscope at the rate of a day for a year, there is the lunation which occurs each

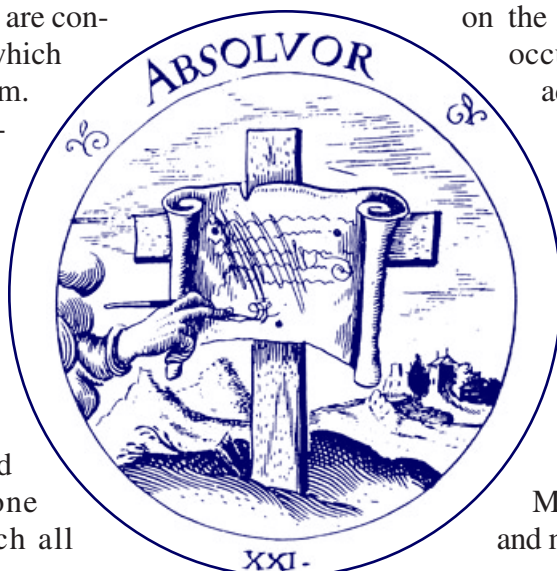
month in a different sign of the zodiac by a conjunction of the moon with the sun. Whenever this conjunction occurs within three degrees of an aspect to any one of the planets in the natal horoscope, the effect of the configuration will be felt during the month governed by this lunation, provided of course that the person is responsive and amenable to that particular stellar influence. For instance, if a lunation were trine to Neptune in the horoscope of a Hottentot or Bushman, you would

find no effect from this configuration; but if, on the other hand, this configuration occurs in the horoscope of an advanced mystic, there will be certain definite spiritual experiences of a beautiful nature during that month.

The influences of these lunations may be divided into three classes: according to whether they affect the Moon, Mars, or Saturn at birth, producing physical results; the Sun, Venus, or Mercury, producing social, moral, and mental effects; or Jupiter, Uranus, or Neptune, which would act upon the spiritual nature.

The results produced under the vibrations of a new moon will naturally depend upon the aspects. Squares and oppositions give trials and troubles. Sextiles and trines give pleasures of a nature consonant with the planetary aspects.

The ordinary lunation does not produce effects for more than one month. But if the lunation happens to be an eclipse, the effect will be felt for a full year from the time of its occurrence. Every time that year when a lunation falls in square to the place of the eclipse, it will re-awaken the evil, if any, experienced at the time when the eclipse occurred. Similarly, if the original lunation was good, then every formation of sextile and trine to its place will bring correspondingly good results. □



Daniel Cramer, *Emblemata Sacra*, 1617

While the stars impel rather than compel, prior to Christ's sacrifice they were more compelling. Thus does this "emblem" illustrate the view of C.G. Jung: "The horoscope is that 'handwriting' of which it is said (Paul, Col. 2:14) that He (Christ) cancelled the bond (...) He set these cosmic powers and authorities to the side, nailing them to the cross."—Mysterium coniunctionis, Zurich, 1968. Man can respond more freely to present planetary energies because Christ Jesus has absolved him of the effects of his earthly sins.